

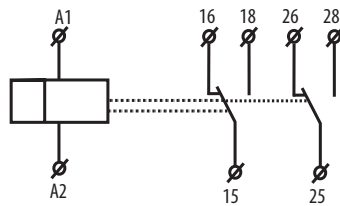
TimetecStarDelta

Star/Delta Timer



The TimetecStarDelta is an adjustable Timer Relay for the starting and changeover of star/delta motors with adjustable ranges for the star period and the switchover time. This small form relay is ideal for controlling the start-up of your motor across a range of voltages.

- Star/Delta Timer with adjustable star time and adjustable switchover time
- Available with 2 Changeover Contacts
- Rated Current 16A
- Supply Voltage 12 - 240V AC/DC
- Time Range 0.1 second to 100 days - Time t1 (Star)
- Time Range 0.1 second to 1 second - Time t2 (Delay)



Order Code

TimetecStarDelta

TimetecStarDelta Technical Specification

Number of Functions	1
Supply Terminals	A1 - A2
Supply Voltage Consumption	AC/DC 12 - 240V (AC50 - 60Hz) AC: 0.7 - 3VA / DC: 0.5 - 1.7W
Supply Voltage Tolerance	-15%; +10%
Time Ranges	t1: 0.1s - 100 days / t2: 0.1s - 1s
Time Setting	Rotary Switch and Potentiometer
Time Deviation	5% Mechanical Setting
Repeat Accuracy	0.2% Set Value Stability
Temperature Coefficient	0.01% / °C, Reference Value = 20°C
Changeover Contacts	2 x Changeover (AgNi)
Rated Current	16A / AC1
Switching Capacity	4000VA / AC1, 384W / DC
Inrush Current	30A / < 3s

TimetecStarDelta Technical Specification

Switching Voltage	250V AC1 / 24V DC
Mechanical Life	3x10 ⁷ Operations
Electrical Life (AC1)	70,000 Operations
Operating Temperature	-20 to +55°C
Storage Temperature	-30 to +70°C
Electrical Strength	4kV (Supply Output)
Operating Position	Any
Mounting	DIN-Rail EN 60715
Protection Degree	IP40 from Front Panel / IP20 Terminals
Overvoltage Category	III
Pollution Degree	2
Max. Cable Size (mm ²)	1x 2.5, 2x 1.5 / 1x 2.5 with Ferrule
Dimensions	90 x 17.6 x 64mm
Weight	84g
Standards	EN 61812-1, EN 61010-1

TimetecStarDelta Function

